



Chair's welcome

Welcome to our first newsUpdate for 2021

This month began with the third lockdown in England and the highest level of restrictions in Northern Ireland, Scotland and Wales. We have contacted all our Registrants to let them know about the restrictions that affect them. Below you will find a summary. Please note that we have refined our advice for English Registrants on seeing clients with a defined health need in person, so please do take another look and make sure you are up to date with the latest information.

As always, we are here to assist with any questions you may have. This is whether you are:

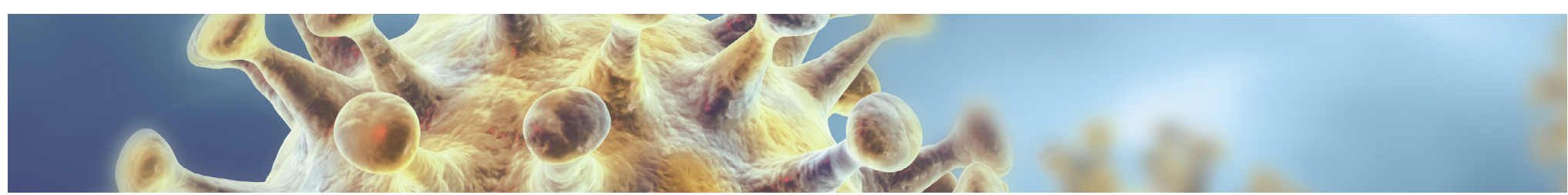
- a Registrant or are interested in registering with us
- a member of the public wanting more information on the current circumstances in which you can be seen by a complementary healthcare practitioner, or to raise any concerns you have about a CNHC Registrant.

CNHC exists to protect the public, ensuring that our Registrants are working within the parameters that the law allows during the Covid-19 pandemic and adhering to our [Code of Conduct, Ethics and Performance](#).

And as a CNHC Registrant, whether you are practising remotely or seeing clients in person (in the limited circumstances allowed in England), you can reassure your clients that you are committed to Standing Up for Standards and are properly qualified, insured and fully compliant with COVID-19 guidance on working safely.

Best wishes,

Michael Watson
CNHC Chair



Coronavirus (COVID-19) update



Update for CNHC Registrants on COVID-19 restrictions on working

You can find out about the current restrictions on working in England, Ireland, Scotland and Wales and how this affects CNHC Registrants on our website.

[Find out more](#)

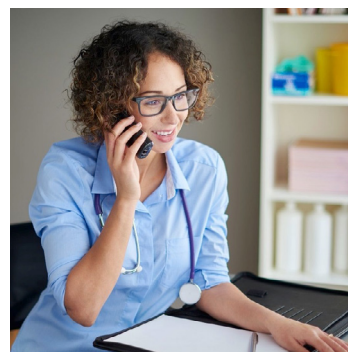


Financial support during the COVID-19 pandemic

We have put together some information about the UK Government's Self-Employment Income Support Scheme (SEISS), the Northern Ireland Newly Self-Employed Support Scheme (NSESS), the UK Government's extension of the Furlough Scheme, and Self-Isolation Support Payments.

[Find out more](#)

Other News



Focus on the CNHC Code: Working with other healthcare professionals

Every month we will highlight sections of CNHC's Code of Conduct, Ethics and Performance. January focuses on working with other healthcare professionals. During the COVID-19 pandemic you might be more likely to have clients who have been referred to you from other services, so this is especially important.

[Find out more](#)



CNHC's Accredited Register opens for Kinesiology

Our Accredited Register opened to the new discipline of Kinesiology on 25 January 2021.

If you practise Kinesiology and would like to register with us, or are already a CNHC Registrant but would like to add an additional discipline to your registration, you can find out how to do this on our website.

[Find out more](#)



Time to focus on healthy food choices in 2021

In our second blog post on supporting your wellbeing by eating well, Claire Sambolino, a CNHC Registered Nutritional Therapist and Communications Manager at the British Association for Nutrition and Lifestyle Medicine (BANT) offers advice on making healthy food choices.

[Find out more](#)



PSA consultation on the future shape of the Accredited Registers programme

The Professional Standards Authority for Health and Social Care (PSA) Accredited Registers programme was set up in 2012 to provide a system of oversight and assurance for people working in health care roles in the UK, and social care in England who do not have to be regulated in order to work. This includes CNHC's Accredited Register for Complementary Healthcare Practitioners.

The PSA are carrying out a thorough review of the effectiveness of the Accredited Registers programme. They would like to hear from all those who could be impacted by their vision for the future and proposals for changes.

[Find out how to take part in the consultation](#)



ECIM 2021: Call for abstracts

The deadline to submit an abstract for the 13th European Congress for Integrative Medicine has been extended to **2 April 2021**. There is an increased sense of enthusiasm for the event from many clinical professionals and research scientists who recognise, perhaps now more than ever, the importance of promoting an integrative approach to healthcare.

The ECIM committee encourages all those who are interested in presenting an oral or poster presentation to submit an abstract online. All successful abstracts will be published in the European Journal of Integrative Medicine (EuJIM) online journal. Topics include; COVID-19 Research & Findings, Integrative Immunology, Lifestyle Medicine, Antimicrobial Resistance, Mental Health & Stress, Planetary & Environmental Pollutants, Integrative Oncology, Nutrition and many more.

[Find out more](#)



Latest job vacancies for CNHC Registrants

[Complementary Therapy Co-ordinator at the East & North Hertfordshire NHS Trust](#): There's still time to apply for this role - the deadline for applications is Friday 29 January. The Complementary Therapy Team Co-Ordinator (Band 5) will lead and develop the fully integrated Complementary Therapy Service in respiratory medicine, delivering reiki/energy therapy and managing a team of qualified energy therapist volunteers, across three sites.

[Complementary Therapies Lead at the Mulberry Centre](#): The Mulberry Centre is an award-winning cancer information and support centre and independent charity, based on the grounds of the West Middlesex University Hospital in Isleworth, West London. It is seeking a Complementary Therapies Lead to work closely with the Mulberry Macmillan Cancer Centre's complementary therapy services.

[Find out more](#)

Contact CNHC

Email: info@cnhc.org.uk | Phone: 020 3668 0406 | Website: www.cnhc.org.uk

Address: 46-48 East Smithfield, London E1W 1AW

